

# The Lens and Eye



Volume 50 Number 10 | Summer 2015 | Editor: Lori Ducharme | Contact: [newsletter@nbccmd.org](mailto:newsletter@nbccmd.org) | [www.nbccmd.org](http://www.nbccmd.org)

## Calendar

### UPCOMING EVENTS

**August 1** - Nature Visions Tickets On Sale

**August 26** - New Member Orientation

**August 30** - Summer Picnic, 4:00

**September 2** - Competition Night, 7:30pm

**September 9** - New Member Reception 7:00;  
Program Night, 7:30pm

## September Competition Topic: Landscapes

An image featuring natural inland scenery in which the hand of man is not visible. (Taken on or after June 1, 2014.)

*Electronic submissions are due by 7:30pm on Sunday, August 30.*

**ATTENTION NEW MEMBERS!!** For those who were rescued from the waiting list this summer, we have scheduled a New Member Orientation on Wednesday, August 26<sup>th</sup> at David Davidson's home, beginning at 7:30 PM. We will introduce our new members to the various activities our camera club offers, including programs, field trips, educational opportunities, and photographic exhibits. We will also go over the competition rules and procedures in detail. Last year's new members found this to be a good investment of their time, and we strongly recommend that you attend. Further information will be sent via email.

(Note: This is *orientation* session is not to be confused with the new member *reception*, which is open to the entire membership and will be held prior to the September 9 program night.)

## NBCC Summer Picnic

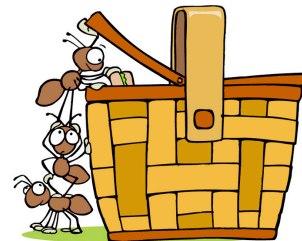
**Sunday, August 30 - 4:00pm**

**Steven Silverman's home near  
Urbana, MD.**

**Details inside!**



## NBCC Annual Picnic: Sunday, August 30



The annual picnic is set for Sunday, August 30th beginning at 4:00pm. This year it will be held at my home, at 11124 Mountain View Lane, Ijamsville, MD 21754 (roughly between Urbana and Frederick). I can be reached at 301-461-7695.

Directions are easy: From Rockville, take I-270 North to Exit 22 (Rt. 109). Go left on Rt 109 for .5 miles, then left on Rt 355 North. Next, go .6 miles on 355 North and turn right on Rt 75. Stay on Rt 75 for 2.8 miles, then turn right on Knolls Parkway. After .5 miles, turn left on Summit Drive and follow to the end. Then turn right on Mountain View Lane, and mine is the 3rd house on the left.

Google Maps or your GPS can also find me easily. ([Here's the Google Maps link.](#))

There is plenty of parking along the street. Please save the driveway parking for handicapped.

There is some shade in the back yard and plenty of room indoors to cool off in either the upstairs great room or the downstairs living room.

Please bring a lawn chair to sit on; a dish to share; and \$5 per person to cover the cost of burgers, drinks, etc. Look for a GordieGram in the near future with a food sign-up sheet so that we don't end up with 27 fruit salads and no chips. There will be a few chores (set-up, clean-up, burger flipping, etc.) for which volunteers would be greatly appreciated. Please let me know if you'd be available to lend a hand, or if you have any questions.

Looking forward to seeing everyone on August 30!

– Steven Silverman ([ssilverman8384@comcast.net](mailto:ssilverman8384@comcast.net))

---

## Upcoming Competition Assignments

### 2015-'16 Club Year

Sept 2015 - Landscapes\*  
Oct 2015 - Open (5 years)  
Nov 2015 - Decisive Moment\*  
Dec 2015 - Leaves\*  
Jan 2016 - Still Life of Fruit / Vegetables\*  
Feb 2016 - Open (3 months)  
March 2016 - Black & White\*  
April 2016 - Open\*  
May 2016 - Methods of Transportation\*

*\*Images must have been taken on or after June 1, 2014.*

### 2016-'17 Club Year

Sept 2016 - Symmetry\*  
Oct 2016 - Open\*  
Nov 2016 - Silhouette\*  
Dec 2016 - Animals\*  
Jan 2017 - Circle/Oval\*  
Feb 2017 - Open (3 months)  
March 2017 - Framing\*  
April 2017 - People at Work\*  
May 2017 - Black & White\*

*\*Images must have been taken on or after June 1, 2015.*



Nature Visions Photo Expo 2015 takes place Friday-Saturday-Sunday November 13-15 at the Hylton Performing Arts Center in Manassas, Virginia with over two dozen instructional sessions, great local and national vendors, and two stupendous exhibits of YOUR work. Registration and sales for paid classes are **open now** at [NatureVisions.org](http://NatureVisions.org). Online registration is required for admission.

As a member club of Nature Visions, NBCC members are eligible to participate in the Nature Visions Photo Expo, an exhibition and competition among all member clubs. **Digital entries for the NVPE nature and fine art photography exhibits will be accepted from August 25 until September 23.** Club members will be limited to a total of six nature entries per member. In addition, club members may submit up to two entries for the re-named Photo Art exhibit (essentially, any topic other than nature). *More information about NBCC's submission process will be sent in GordieGrams and described at the September 9th club meeting.*

This year's all-day Friday Seminar Speaker is the well-known landscape photographer **Marc Muench**. Marc's images have appeared on covers and inside *National Geographic*, *Sierra* and *Arizona Highways*; Marc is the photo editor of the National Parks guides and a fellow of the International League of Conservation Photographers. Marc's father is David Muench, the legendary landscape master.

The Saturday Keynote address will be given by a genius of imagery and lighting, **Joe McNally**, author of *The Hot Shoe Diaries: Big Light from Small Flashes*, *Faces of Ground Zero* and other outstanding books of photography and instruction. Joe has been a contract photographer for *Sports Illustrated* and a staff photographer at *LIFE*, and is a 23-year contributor to *National Geographic*, shooting numerous cover stories. *American Photo* magazine calls him "perhaps the most versatile photojournalist working today."

The Sunday FREE Featured Speaker is **Tim Grey**, the digital photography educator and co-author with Art Wolfe of *The New Art of Photographing Nature*. Tim gives two FREE presentations on Lightroom and his work on Sunday. Tim is well-known for his FREE daily e-mail digest on digital photography and post-processing, *Ask Tim Grey* [<http://asktimgrey.com/newsletter/>].

The Sunday Noontime Featured Speaker is **Ron Magill**. A Nikon Ambassador, Ron has worked with wildlife for more than 35 years and is internationally recognized for his photographic "hands-on" experience, from swimming with sea lions in the Galapagos, to tracking tigers on an elephant in India. A documentary producer as well as a photographer, Ron's work has appeared in the Smithsonian and in publications and galleries around the globe.

Discount classes for beginning photographers will be offered again this year for only \$2 per session.

### **NBCC wants to have a great showing at this year's event. Here's what you need to do now:**

**REGISTER.** Go to the Nature Visions website and review the lectures and hands-on classes that are available. This link takes you to a handy overview of the full weekend, along with fees for each session: <http://naturevisions.org/the-exhibits/schedule/> [Hint: Grab a pencil and paper and figure out what sessions you want to take, and what they cost. The Merchant Hall 2- or 3-day pass may or may not be the best match for your interests.] Note that the hands-on workshops (Macro, Curious Critters, bird photography) WILL sell out quickly, so early registration for those is advised. If you'll be spending the weekend in Manassas, now's also the time to think about hotel reservations if you want them.

**ROUND UP YOUR BEST IMAGES:** Help NBCC with a spectacular set of entries in this year's Expo. Read the rules and requirements for submission, and get your files ready for electronic submission when the entry period opens on August 25. Details and rules are available at this link, and in recent and upcoming GordieGrams. This will also be a focus of the September 9th program night. Note that you do not need to make your own prints (commercial printing is fine), and you do not need to frame your images (only matted images are displayed at the Expo).

Questions? Contact Steven Silverman ([ssilverman8384@comcast.net](mailto:ssilverman8384@comcast.net)) or any of the members of the NBCC Nature Visions committee.

# Fabulous Field Trips



NBCC field trips provide many opportunities to learn and grow as photographers – and to have some fun with other club members. The Field Trip Committee tries to meet diverse needs and interests, organizing some field trips on weekends and some on weekdays to accommodate members' different schedules. We try to plan at least some field trips with competition assignments in mind, and we organize different types of field trips, including informal "meet ups," "regular" field trips, and overnight excursions. (See below.)

This year, we have several ideas in mind AND we'd love to hear from you if you have a suggestion. Places where members might not have access otherwise are particularly popular. Please send ideas to Gail Bingham ([gbingham@resolv.org](mailto:gbingham@resolv.org)).

Some of the ideas in play for the coming year (stressing still "in play") include: the "Steel Wheels Festival" put on by the Western Maryland Scenic Railroad in September; high heeled "drag" races at DuPont Circle at the end of October; a chance to photograph raptors; action shots at the half pipe at Ski Liberty; the luminaries at Antietam or holiday lights at Brookside Gardens, Chanticleer or Longwood gardens; historic Frederick MD; the Marine Corps silent drill at the Iwo Jima memorial; and the B&O railroad museum in Baltimore. We're also planning a spring overnight field trip, perhaps to the Charlottesville area, the Shenandoah Valley/Blue Ridge, or to the Eastern Shore. The plan is to send out a survey with more than one idea and ask what members would find most interesting.

Also, with a hat's off to Bruce Cyr for uploading images, we want to do more this year to collect and share field trip photos on the club web site ([nbcc.phanfare.com](http://nbcc.phanfare.com)).

**September Field Trip:** The "Steel Wheels Festival," put on by the Western Maryland Scenic Railroad, will be on September 11-12, in Cumberland, MD. More information follows on the next page, and even more details are available at [www.wmsr.com](http://www.wmsr.com).

**Terminology:** Just so you know what to expect throughout the year, here's what we mean by the different types of "field trips:"

"*Meet up*" – informal opportunity for individual photography (i.e. there is no formal field trip "leader.") Often although not always, meet ups are at short notice (e.g. for seasonal activities such as bluebells, fall color). No formal activities are organized, but the "sponsor" writes something for a Gordiegram, and a short article for the Lens and Eye if there's time.

"*Regular field trip*" – organized activity in the sense that the "leader" may arrange for special access to a venue, identify whether tripods are allowed, be at a pre-arranged location for members to meet, and possibly (although not always) organize a lunch together. The leader is not expected to provide instruction, however. If there is a limit to the number of people who can attend, the leader coordinates RSVPs. The leader also writes an article for the Lens and Eye and sends a follow up email to those who came encouraging them to share images with Bruce Cyr for the field trip web site.

"*Overnight field trip*" – organized activity, generally involving a Friday or Saturday dinner and overnight. Organization similar to a regular field trip but a little more extensive, with recommendations for places to stay. A follow up photo-sharing evening often is popular.

Here's looking forward to a great year!!

– Gail Bingham on behalf of the Field Trip Committee, which includes Bruce Davis, Lori Ducharme, Joanne Mars, Larry Mars, Dick Pelroy, Steve Silverman and Jim Turner.

# September Field Trip: Steel Wheels

Few images convey energy more forcefully than a photograph of an old fashioned steam locomotive in action. That is only one of the possible photo opportunities you'll have at our field trip to Steel Wheels, a festival put on by the Western Maryland Scenic Railroad. **This is an overnight field trip for September 11-12.**

## Friday, September 11, 2015

Travel to Cumberland, Maryland on your own and check in at your hotel. There will be sights to see on the way.

*4:30 p.m.* Arrive at the Cumberland railway station, and pick up your ticket. (You need to purchase your ticket in advance and pick it up at the station). Meet up with other photographers from the Club, and get ready to board the train.

*5:00 p.m.* Twilight Diesel Photo Excursion. Photo opportunities arranged by the WMSR Foundation and Pete Lerro of Lerro Productions. Signals on two signal bridges will be lit for the trip. Buffet dinner in Frostburg at the Trail Inn (included in ticket price). Return travel to Cumberland, arriving Cumberland station at 9:30pm.

## Saturday, September 12, 2015

Photograph steam locomotive 734, a 1916 Baldwin 2B8B0 called Mountain Thunder, pulling a passenger excursion train through the mountains to Frostburg and back to Cumberland. Vantage points along the route are accessible by road.

11:30 a.m. Train departs Cumberland station.

12:30 p.m. Train arrives at historic Frostburg train station. Engine reverses direction at Frostburg turntable.

2:00 p.m. Train departs Frostburg, arriving back in Cumberland at 3:00pm.

## *How to Join the Field Trip*

- Purchase your ticket for the Friday, September 11, 2015, Twilight Diesel Photo Excursion. Call (301) 759-4400 or (800) 872-4650 or purchase your ticket online at [www.wmsr.com](http://www.wmsr.com). Tickets cost \$50, which includes a buffet dinner in Frostburg.
- Send an email to field trip organizer Bruce Davis to tell him you have purchased your ticket. Bruce's new email address is [bdavis39@comcast.net](mailto:bdavis39@comcast.net).
- Bruce will provide you with information on accommodations and directions to good sites for photographing the train.
- Arrive at the Cumberland railroad station in time to board the excursion train on Friday, September 11, 2015. Note: the excursion train will be pulled by a diesel locomotive, not by Mountain Thunder.

## *Other Information*

- At this writing, WMSR has plenty of tickets available for the September 11 photo excursion train. However, there is no guarantee that tickets will be available if not purchased promptly.
- Depending on interest, participants may wish to get together for a breakfast meeting on Saturday, September 12. This would be a great opportunity to review the directions to sites for photographing the train and to arrange for car pools to the sites.
- More information is available from: Western Maryland Scenic Railroad ([www.wmsr.com](http://www.wmsr.com)), and from Tripadvisor: [www.tripadvisor.com/Tourismg41098Cumberland\\_MarylandVacations.html](http://www.tripadvisor.com/Tourismg41098Cumberland_MarylandVacations.html).

– Bruce Davis, Field Trip Committee



# NBCC Field Trip Image Website



© David Davidson

Did you know that NBCC has a website where members can post images from club field trips? We do! The latest addition is an on-line slideshow of images by nine members who participated in the field trip to Waterside Woolen Mill on May 2, 2015. The site URL is: <http://nbcc.phanfare.com/>

The Woolen Mill trip is reflected in 60 images from these photographers: Caroline Helou, David Davidson, Mike Mitchell, Tammy Trocki (Member-in-Waiting), John Burgess, Lester LaForce, Steve Lapidus, Dick Pelroy, and Bruce Cyr.



© Caroline Helou

The slideshow has a variety of interesting subjects and scenes. Most obvious is a lot of old wool weaving machinery, but there are also set-ups of available items in the mill plus a few landscapes and other scenes from the greater Bedford, PA area. Techniques used include straight photography, flash, HDR, panoramas, HDR/panoramas, focus-stacks, and possibly other techniques. Some objects were photographed by the same photographers from a variety of perspectives using different methods, while others are unique. Contributing photographers noted that they learned from observing how other photographers treated the same subject.



© John Burgess

When you visit the website, at the top of the left-hand column of albums, click on the name of the slide show: [Waterside Woolen Mill -- North Bethesda Camera Club](#), or its associated thumbnail to view the first image in the show. Then in the upper right hand corner of the new page, click on the link labeled [Start Slideshow](#).

Look for more opportunities to post your images here after upcoming field trips!

– Bruce Cyr

# PCR Awards Dinner

- by Toni Robinson, images by Chuck Lee

I have been an NBCC member for 3 years, and I have to admit that until I became Treasurer, PCR was not in my consciousness. And even then, as Treasurer, it was simply a line item in the budget for 'Outreach.' When Joel Hoffman invited the membership via Gordiegram to attend the PCR Awards on July 7th, I went more out of curiosity than anything else. Was I in for a surprise!

PCR, officially known as Potomac Community Resources, promotes the inclusion of persons with developmental differences into the life of our community. NBCC partners with this organization to promote the Phabulous Photographers, a group of about a dozen inspirational youth and adults.

When I arrived at the facility for the event, I was greeted by approximately a dozen tri-fold displays of photographs. The photographers, some of whom can't speak very well, some of whom don't have control over their limbs, were there to share the results of their photographic efforts. Like NBCC, they had themes to focus their efforts (and many looked very familiar to our own!). Many of them had also done a photo essay, and although the format was not electronic and didn't have music, I found them totally inspirational. The joy, excitement and pride the photographers expressed were more moving to me than I could have imagined.

The sense of pride I had felt being a member of our wonderful club paled in comparison to the sense of pride I felt experiencing how our club members are giving of themselves in such an amazing way. In addition to the leadership provided by Joel Hoffman, I discovered the following club members devote their time to this program: Chris Hanessian, Judy Switt, José Cartas, Bob Peavy, Kent Mason, and more.

I don't know how many more volunteers might be needed for this committee, or what requirements there are for volunteering but I think we all should give a great shout-out to the NBCC members in the group. And if it is at all possible, I encourage you to be inspired by these Phabulous Photographers next year!





# Member Profile

Bob Murphy, of Towson, Md., may well travel the furthest of any member to attend our regular meetings. He got interested in the Club after discovering Tom Field's web page on photographing the moon, and then meeting Tom and Bruce Cyr at a "Capital Moon Event" held at the Netherlands Carillon. He has spent his first membership year enjoying Club programs and the critiques of the competition judges. He has also amassed significant points in the Novice Traditional Electronic category, enough to put him into the first place for the 2014-15 year. In addition, his image of a Hawaiian rainstorm, Upper Manoa Valley, was selected as one of this year's Top Ten electronic images.

Dr. Bob Murphy is a retired NASA scientist who still enjoys an ongoing fascination with the moon. When he was only 7 years old, one of his parent's friends declared that he was a "smart kid," and suggested that he might want to become an astronomer. The notion stuck with him and influenced his choice of courses when he entered college. He earned his Bachelor of Science in 1963, with a math heavy curriculum, at Worcester (Mass.) Polytechnic Institute, then went on to receive a Masters in Astronomy at Georgetown University in 1966. In 1969, he completed the requirements for a PhD from Case Western Reserve in Cleveland, Ohio.

In 1969, he also joined the staff of the Institute of Astronomy in Hawaii where he helped place the 88 inch telescope, then the 6th largest in the world, into operation. Much of his research was in thermal infrared. He was the first to show that the planet, Neptune, radiates more energy into space than it receives from the Sun. He also used infrared techniques to determine accurate diameters of two of Saturn's moons. His discoveries have since been trumped and amplified by the Voyager, Galileo and Cassini missions and by better equipment, but were very significant for the times.

In 1973, he moved to Baltimore to head up the then-fledgling Maryland Science Center which now graces the Inner Harbor. In 1977, he joined NASA headquarters as the manager of the Planetary Atmospheres program. During the next 27 years he held a variety of other positions including Program Scientist on the Pioneer Venus and Galileo missions, and head of the Land Processes and Biogeochemistry Branches. In the mid-90s he began focusing on earth science, and the interaction of the Earth's biosphere with the atmospheric system. These land-atmosphere studies are now a key part of our understanding of the



*Photo © Kimberly Murphy Boeve*

global carbon cycle. During his 27 year career, he headed up 3 branches at NASA HQ and NASA Goddard. He was the Chief Scientist for two Earth Science Missions (HCMM and Soumi NPP,) and for a space-borne imager, MODIS. Soumi NPP and two Modis instruments are still in orbit, gathering spectacular images and solid environmental data on a daily basis. After retiring from NASA, Bob continued working on these missions as an adjunct professor at George Mason University until he fully retired in 2013. He has also taught Astronomy at Stevenson University.

Bob is also a world traveler who was born in Yakima, Washington and lived up and down the west coast of the U.S. and in Hawaii before he was 10. Then his parents, who had met in college, divorced and his mother brought him and his sister to live in Arlington, Virginia. He met his wife, Nancy, in the fifth grade in an Arlington public school and they were good friends through high school and college, before marrying in 1965. They have two children, Kimberly and Mark, and two grandchildren: Lexi, age 16, and Manda, 13.

To get an insight into the quality and variety of Bob's images and to read more about his personal aesthetic philosophy, particularly as it concerns "Moon shots," you might want to look at his website at <http://www.scientiaphoto.com>. It also contains galleries of his photos from Hawaii, Russia, the African continent and other locations, and a commentary on his use of HDR Imaging.

*Continued*



Bob first became interested in photography in high school where he used his mother's camera, a 35mm Argus, and later his own Fujica 35mm rangefinder, plus Kodachrome film with an ISO of 10, to document his school life. In his senior year in college, he was photography editor of the school yearbook, having cut his teeth on a Speed Grafflex. His first SLR was an Asahi Pentax (1971) and his first digital camera, a Nikon D995, purchased in 1993. He now uses a Nikon D610 to shoot landscapes, travel images and portraits. His favorite lenses are a 24-85mm, a 70-300mm, and an 85mm f/1.4. He hopes to rent, in the near future, a Nikon D810 camera especially designed for Astrophotography. It features a 36.3MP resolution and a specialized filter to capture red tones of H-alpha emission nebulae.

For post processing, Bob finds that he does 75% of the work in Lightroom. However, he also uses Photoshop, Nikon Capture (for pre-processing) and Efex Pro. He long ago gave up on making his own prints, having consumed enough ink jet cartridges and paper to reach the moon and not producing one worthwhile image. His goals are to improve his compositional skills and broaden his range while continuing to make ever more challenging and attractive images of the moon shining on earth's landscapes.

– Jean Hanson

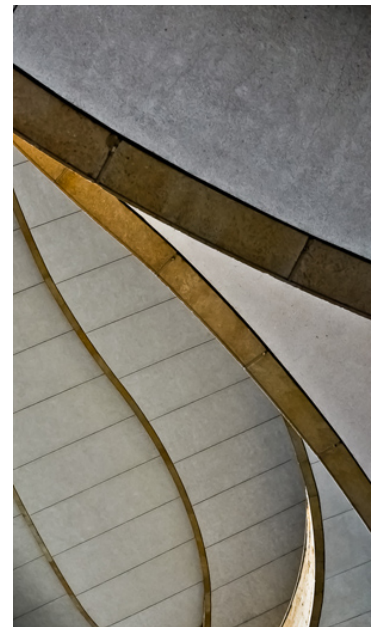
---

## In Memoriam



**Joan Linderman** joined NBCC in 2007 and actively participated in the Club's competitions and educational workshops. She passed away on March 29. At the year-end NBCC awards dinner, her beautiful image of camels walking across the Moroccan desert won the Traditional Electronic Image of the Year award.

Joan was profiled (elegantly, as usual) by Jean Hanson in the [April 2013 issue of the Lens & Eye](#). Her personal photo gallery remains available online at <http://linderman.smugmug.com>. Our condolences to her family and friends.



*Moroccan Music (L), and American Indian Museum (R) – © Joan Linderman*

# President's Corner

– by David Davidson, NBCC President

Hi Camera Club members. I hope you are having a delightful summer.

Our competition rules have changed significantly this year. Therefore, I am going to devote my column in this summer edition of *The Lens & Eye* to a description of our new competition rules.

Each month there will be five competition categories: in the Electronic competition, we will have novice, intermediate and advanced categories; in the Print competition, there are now intermediate and advanced categories only. These expertise levels are to be self-selected, and you can compete in different categories for the electronic and print competitions. For example, you may consider yourself advanced in electronic competitions based on prior winning experience, but only at the intermediate level in print competition. That is perfectly acceptable. However, once you have decided on a level in electronic and print divisions, we ask you to stay at that level throughout the year.

As in the past, each month the competition will involve a photographic theme, or in some months it may be an open competition with no required theme. Please note that we will no longer make a distinction between “traditional” and “unrestricted” images – for reasons I have described in previous articles in *The Lens & Eye*.

Another change is that each month will also feature a 6<sup>th</sup> category called “Member’s Showcase.” This will NOT be a competition category, and there will be no assigned theme – images may be submitted on any topic of the member’s choice. Only electronic images may be submitted into this category, and submission is for constructive critique only. The judge will address two and only two questions about each image: What do you like about the image? and How would you improve this image? The judge will be allowed to ask the image maker questions about the image, and the image maker will be encouraged to respond to any questions the judge asks. This category should provide an outlet for members who might not be interested in competing or shooting on the assigned theme, but would like an opportunity to get feedback on their images.

There is still a limit of 4 submissions each month – no more than 2 print, and no more than 2 electronic images. The 2 electronic images include the competition or the Member Showcase. So, you could submit 2 electronic images in the competition OR 2 in the Member Showcase OR 1 in each. You could then also submit up to 2 prints.

There are also some important changes to how you submit images each month. First, the club has a new email address for submitting electronic images: [competition@nbccmd.org](mailto:competition@nbccmd.org).

Like last year, images submitted into any of the electronic categories should be 1920 pixels wide or less, and 1200 pixels high or less. But with new categories, we have a new file naming convention for your submitted .jpg files, which will look like this: **Intermediate - Your Name - Title of Image.jpg**, reflecting your chosen category.

These are just highlights of the competition rules. **Before entering September’s competition, you are asked to read all of the competition details on the NBCC website.** In particular, read the following:

- NBCC Competition Rules: <http://www.nbccmd.org/docs/CompetitionRules.pdf>
- Electronic Submission Guidelines: <http://www.nbccmd.org/docs/EICsubmissionguidelines.pdf>
- How to prepare images for Electronic Competition: <http://www.photocentric.net/ImagePrep.pdf>
- Frequently Asked Questions: <http://www.nbccmd.org/EICfaq.htm>

# PSA News

– Judy Burr, NBCC PSA Representative



[www.psa-photo.org](http://www.psa-photo.org)

Most recent activities in PSA have involved planning the Annual Conference which will be held in West Yellowstone, MT from September 27 to October 3. At least 3 NBCC members will be attending and will provide their views in a future column. Featured speakers will be Art Wolfe, Tim Gray, Bryan Peterson and Mike Moats. There will be programs covering all aspects of photography and each Division will have their own set of programs which are open to all. Many tours are available for those who don't have other transportation available. There is no doubt that Yellowstone National Park will be filled with conference attendees from several countries around the world. There will be plenty of speakers and programs from PSA members from around the world. There was record attendance when the Conference was held there in 2009. As always, there will be showings of the PSA International Competitions for each Division. This is the only International Exhibition sponsored by PSA. It is a good place to start competing in exhibitions since the cost is low compared to some others; anyone can enter these and can participate in as many Divisions as desired.

The June issue of the **PSA Journal** has articles on copyrights, making photo books and the usual reviews of books and software. At least 2 Divisions are holding photo book competitions—Pictorial Print Division and the PJ Division. These competitions are in addition to the photo essay competitions held in the Projected Imaging and Photo Travel Divisions. We all take so many pictures that may not work as an individual photo, but would be great in a photo essay or book. The digital age has provided many more ways for us to use our images and we should take advantage of them whether or not they are for a competition.

The PSA Board of Directors met in late April when the Honors committee recommendations were approved, new By-Laws were approved as was a new definition of Photo Travel. That will become effective January 1, 2015. The Photo Travel Division is working hard to make it clear that posed pictures and set-ups are NOT permitted. Images must express characteristic features or culture of a land as they are found naturally. The new definition is available on the PSA website.

The July issue of the **PSA Journal** contains a lot of information about the conference and presenters. However there are several interesting articles including one titled *Romancing Race Cars* which may interest car enthusiasts and others as well. There are also well illustrated articles on Costa Rica and Namibia. If you love making photo essays and want to put them on line, you have to use Royalty free music (which may not be free!), have a license to use it or it must be in the public domain. Copyright holders of music are the composer, lyricist, singer, musician and often the company that manages the copyrights. YouTube has free and usable music at <https://www.youtube.com/show/freemusic>.





# NBCC Year End Awards Event



*Clockwise from top left: Josh Taylor with the Top 10 Traditional Print winners; President David Davidson presides over the evening; Star Award winners; Joel Hoffman presents the Star Awards; Sarah Salomon presents José Cartas a medal for his Glennie Award-winning image; and Josh Taylor describes Joan Linderman's Traditional Electronic Image of the Year.*

# Year End “Top 10” Award Winners

Judge: Josh Taylor

## Top 10 Traditional Prints

*Image of the Year:*

*Bill Seelig - Big Selfie*

Barbara DeLouise - Dahlia  
Greg Holden - Art Deco  
Morris Liss - Blazing Match Stick  
Morris Liss - Gnawa Tribesman  
Larry Mars - Rain on the Porch  
Toni Robinson - Riomaggiore  
Jack Rosenberg - Autumn  
Bill Seelig - Fractured  
Dawn Sikkema - Zion Sentry

## Top 10 Unrestricted Prints

*Image of the Year:*

*David Clemmer - Station 17*

Gail Bingham - Insiders & Outsiders  
Bruce Cyr - Red Amaryllis  
Lester LaForce - Volcan de Fuego, Mexico  
Lester LaForce - Snow Ball  
Joanne Mars - Serena  
Dick Pelroy - Building Museum  
Dick Pelroy - National Cathedral  
Dick Pelroy - Truck Graveyard  
Bill Seelig - Black & White

## Top 10 Traditional Electronic Images

*Image of the Year:*

*Joan Linderman - Moroccan Wide Open Spaces*

Stan Collyer - Colorado Vista  
Michele Egan - Irish Girl  
Michele Egan - Little Girl  
Morris Liss - Diagonal Fantasy  
Kent Mason - Big Meal  
Bob Murphy - Upper Manoa Valley  
Dick Pelroy - Snow Geese in the PM  
Jean Pierre Plé - Blue  
Nancy Wolejsza - Visitors

## Top 10 Unrestricted Electronic Images

*Image of the Year:*

*Bruce Cyr - Got It, Maybe*

Bruce Davis - Great Egret Strikes  
Lori Ducharme - Dancing Cranes  
Dick Pelroy - Grand Teton National Park  
Jim Turner - BC Pinecone  
Jim Turner - Eggs and Feather  
Jim Turner - Rainy Day  
Jim Turner - Self Portrait  
Jim Turner - White Magnolia  
Anita van Rooy - Columbine



## Year-End Judge: Josh Taylor

This year the un-enviable task of selecting the top 10 images in each of 4 competition categories fell to Josh Taylor. Josh has judged for NBCC in previous years, and has presented photography workshops at the Smithsonian National Orchid Show, U.S. National Arboretum, U.S. Botanic Garden, Brookside Gardens, Sarah P. Duke Gardens, American Horticultural Society Garden School, Adkins Arboretum, and Longwood Gardens. In addition to being a Canon Camera instructor, Josh speaks at camera and garden clubs, judges photographic competitions, and exhibits his photographs in gallery shows. He is a member of Garden Writers Association, National Association of Photoshop Professionals, and member and past president of the Northern Virginia Photographic Society. Josh was voted best garden club speaker in 2005 and was a judge for the 2009 Garden Writers Association National Media Awards and the 2010 Mid-Atlantic Nature Photography Expo. Longwood Gardens selected Josh as its Instructor of the Month (October 2010) and was a selected photographer to assist the public in photographing Bruce Munro's *Light: Installations* (2012). You can view his portfolio at <http://joshuataylorphotography.com>.

Josh offered the following comments on his selected images of the year:



© Bill Seelig

**Bill Seelig's** "Big Selfie" really raises the bar on black and white images (photographs). It has a phenomenal tonal range. Beautiful lighting, detail in the shadows, and above all separation—the black suit is separated from the black background. The image just grabs the viewer. The angle of the man balances the camera on the right—visual weight. Also, the image demonstrates skillful portrait lighting and printing.

**David Clemmer's** image of the fire truck at "Station 17" illustrates how the ordinary can become the extraordinary. The unrestricted category offered a real opportunity for photographers to showcase their creativity. No doubt this photographer was up to the challenge! A traditional fire truck image was transformed into a striking graphic image. The subject was the right image for this post-processing technique. A well done and crafted creative image with impact!



© David Clemmer



© Bruce Cyr

For a memorable image, the photographer needs attractive lighting, good composition, a compelling subject, background control, and technical skills to capture the image at peak action. **Bruce Cyr's** "Got it...Maybe" exemplifies all of the necessary components of a compelling capture. The selection was based on the content of the image (visual appeal) and the skill of the photographer to capture a moment in time that cannot ever be recreated. It's a "Wow" image.

Great light creates joyous and beautiful images. **Joan Linderman's** "Moroccan Wide Open Spaces," featuring the caravan crossing the desert is a striking image. The light brings out the texture in the sand

dunes and enhances the camels and their riders. The bright blue dressed caravan leader makes this image special. Usually, I find a colorless sky a distraction, but in this case it's an asset. The colorless sky adds a graphic quality—almost like a cut paper collage. All of the planets were aligned for this photographer to capture such a visually powerful image. This image has visual impact! While there are other images in this category that highly exemplified traditional photography, this image was an attention grabber.



© Joan Linderman



## Final NBCC Competition Scores for 2014-2015 Club Year

### PRINTS

<b>Novice Traditional</b>	<b>Advanced Traditional</b>
52 Kay Norvell	56 Joanne Mars
42 Beth Altman	50 Cheryl Naulty
35 Toni Robinson	45 Bill Seelig
25 Steve Lapidus	42 Chuck Bress
25 Ray Whitman	27 Chet Stein
19 Morris Liss	26 Larry Mars
10 Neil Hermansdorfer	25 John Norvell
9 Mike Fleming	23 Greg Holden
9 Roberto Soto	22 Gail Bingham
8 Claudia Seelig	18 Morris Liss
8 Leon Wetrogan	16 George Lea
6 Michele Egan	15 Dawn Sikkema
6 Melvyn Kopstein	14 Jean Yuan
6 Ellie Trybuch	12 Jack Rosenberg
	10 David Davidson
	10 Melissa Clark
	6 Barbara DeLouise
	6 Al Tanenholtz

### ELECTRONIC IMAGES

<b>Novice Traditional</b>	<b>Advanced Traditional</b>
50 Bob Murphy	68 Stan Collyer
44 Toni Robinson	64 Chet Stein
44 Claudia Seelig	61 John Norvell
36 Kay Norvell	44 Dick Pelroy
33 Jill Randell	40 Cheryl Naulty
25 Michele Egan	27 Ken Goldman
24 Ray Whitman	22 John Willis
18 Louise Roy	21 Melissa Clark
17 Ellen McGovern	21 Jean Pierre Plé
15 Morris Liss	17 Mark Segal
14 Nancy Brun	16 Bob Peavy
14 Neil Hermansdorfer	16 Dawn Sikkema
10 Anne E Pemberton	15 Cynthia Hunter
9 Joan Linderman	12 Judy Burr
8 Bob White	12 Larry Burton
6 Steven Lapidus	12 Sarah Salomon
6 Lauren Ludi	12 Nancy Wolejsza
6 Steven Silverman	10 David Davidson
6 Lorainne Vinci	9 Kent Mason
	8 Morris Liss
	6 Gail Bingham, Chuck Bress, Jean Hanson, Jack Rosenberg, Steven Silverman, Al Tanenholtz, Paul Taylor

### **Novice Unrestricted**

10 Toni Robinson  
10 Roberto Soto

### **Advanced Unrestricted**

93 Lester LaForce  
83 Dick Pelroy  
47 Jim Turner  
38 Bruce Cyr  
34 Bill Seelig  
30 Carol Walsh  
28 Stan Collyer  
20 Gail Bingham  
12 Willem Bier  
10 Stuart Glickman  
10 Morris Liss  
6 David Clemmer  
6 Kay Norvell  
6 Dawn Sikkema  
6 Roberto Soto  
6 Jean Yuan

### **Novice Unrestricted**

40 Toni Robinson  
29 Neil Hermansdorfer  
18 Steven Silverman  
15 Raymond Ao  
10 Silvie Ao  
10 Ray Whitman  
9 George Lea  
9 Geri Millman

### **Advanced Unrestricted**

72 Lori Ducharme  
72 Jim Turner  
64 Bruce Cyr  
49 Bruce Davis  
24 Evelyn Jacob  
24 Chuck Lee  
20 Ira Adler  
20 Carol Walsh  
18 David Davidson  
18 Sarah Salomon  
16 Dick Pelroy  
15 Raymond Ao  
15 José Cartas  
14 Gail Bingham  
14 Melissa Clark  
12 Judy Burr  
12 Eric Schweitzer  
10 Jean Hanson  
10 Jack Rosenberg  
9 Cheryl Naulty  
9 John Norvell  
8 Stuart Glickman  
6 Carol Lee, Dawn Sikkema, Anita van Rooy, John Willis

## 2014-2015 NBCC Board of Directors, Standing, and Special Committees

<b><u>President</u></b> <i>David Davidson</i>	<b><u>Vice President</u></b> <i>Gail Bingham</i>	<b><u>Secretary</u></b> <i>Bruce Davis</i>	<b><u>Treasurer</u></b> <i>Toni Robinson</i>	<b><u>Directors</u></b> <i>Carol Lee</i> <i>Joel Hoffman</i>	<i>Gordie Corbin</i> <i>Kent Mason</i> <i>Alan Sislen</i>
<b><u>Programs</u></b> <i>Paul Taylor</i> Kent Mason John Norvell Ray Whitman Michele Egan	<b><u>Membership</u></b> <i>Chuck Lee</i>  <b><u>Exhibits</u></b> <i>Sarah Salomon</i> Melissa Clark Sibyll Erdman Dawn Sikkema Alan Simmons John Willis  <b><u>Webmaster</u></b> <i>Tom Field</i>	<b><u>Competition</u></b> <i>Judy Switt</i>  <i>Prints</i> Bill Ho Bill Richards Bill Seelig  <i>Electronic</i> Willem Bier Tom Field John Willis	<b><u>Judges</u></b> <i>Steve Robinson</i> Chet Stein Eric Schweitzer Morris Liss Larry Burton  <b><u>Nature Visions</u></b> <i>Steven Silverman</i> John Norvell Jean Pierre Plé Lori Ducharme	<b><u>Hospitality</u></b> <i>Claudia Seelig</i> Bill Seelig Geri Millman Terry Van Houten Jim Render Virginia Render Ellie Trybuch Ira Adler Mark Segal Jitesh Batra	<b><u>Field Trips</u></b> <i>Cheryl Naulty</i> Cynthia Keith Gail Bingham Bruce Davis Dick Pelroy Steve Silverman Joanne Mars Larry Mars  <b><u>Lens &amp; Eye</u></b> <i>Lori Ducharme</i>
<b><u>Education</u></b> <i>Chris Hanessian</i> Evelyn Jacobs Kent Mason	Sarah Salomon Roy Sewall Alan Sislen	<b><u>Community Outreach</u></b> <i>Joel Hoffman</i> Ron Dietrich Chris Hanessian	Bob Peavy José Cartas Judy Switt Kent Mason	<b><u>Corbin-Switt Photo Essay</u></b> <i>Stu Mathison</i> Willem Bier David Davidson	Tom Field John Pan John Willis
<b><u>PSA Representative</u></b> Judy Burr		<b><u>Awards Event Coordinator</u></b> John Villforth		<b><u>Database Administrator</u></b> Ken Goldman	<i>Voting members in bold</i>

Note: 2015-'16 Committees are still in formation. Look for an updated list in the September *Lens & Eye*.

NBCC, founded in 1965, meets most Wednesday evenings from September to May. Competition and program meetings are held in the fellowship hall of the Faith United Methodist Church, 6810 Montrose Ave., Rockville, MD. Membership meetings are open and guests are always welcome.



Membership in NBCC is capped at 165 members and we currently have a waiting list. For more information about the club and for an application, visit the Membership section of the club website at [www.nbccmd.org](http://www.nbccmd.org)